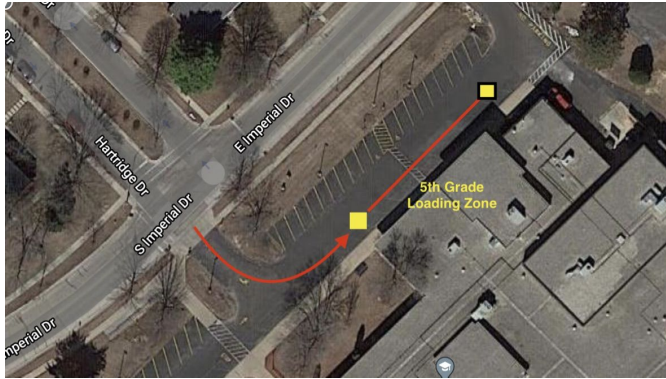


## 2020-21 HARTLAND SOUTH REVISED ARRIVAL AND DISMISSAL PROCEDURES

### 5th Grade Arrival and Dismissal Update:

If you only have a 5th grader please enter at the intersection of Imperial and Hartridge. You should pull forward along the front of the building so we can load cars on either side of the front doors. If you have multiple children I would encourage your fifth grader to walk down and meet your 3rd or 4th grader and load in one location.



### 3rd and 4th Grade Arrival and Dismissal Update:

Third and Fourth Grade Families can drop off and pick up their children **anywhere** along the sidewalk between the end of the fence and the crosswalk. Students can then use the sidewalk to enter the appropriate doors. Please stay in line. If we do it well we can unload/load in groups and keep traffic moving.



Several vehicles have been unloading behind the driver's side. This is especially concerning when vehicles do not stay in line. Our goal is to keep everyone safe and make this as efficient as possible. Your patience is appreciated :)